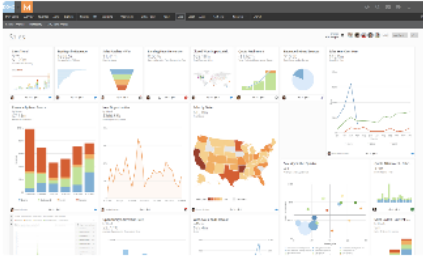


Domo Export Integration

Domo's integration with Treasure Data is currently in private alpha. You can [contact us](#) for details.

Using [Domo](#) with Treasure Data allows users to create impressive and effective charts and dashboards.



- [Prerequisites](#)
- [Setup](#)

Prerequisites

- Basic Knowledge of Treasure Data
- A Domo account

Setup

1. Login to Domo and go to the data connectors page.
2. Find Treasure Data connector using the search box.
3. Select Treasure Data.

< DATASETS

Data Connectors

Database Connectors (1)

🔍 treasure



In the Credentials section, choose the appropriate domain and enter your [master API key](#). If you enable whitelist IP, add the IP address from Domo.

Currently Available DOMAINS

- api.treasuredata.com – for customers using the U.S. region
- api.treasuredata.co.jp – for customers using the Japan region



Create TreasureData DataSet ?

Treasure Data is a cloud data management platform that makes it easy for anyone in your organization to connect and access Live Data.

Credentials

Treasure Data Account

DOMAIN
api.treasuredata.com ?

* API KEY
..... ?

CONNECT CANCEL ASSIGN SOMEONE

In the Details section, select the Treasure Data report to run. For example, if you would like to use a custom query for a report, choose Execute Job and write your custom query.

Credentials

Details

* REPORT
Execute Job ?

* DATABASE
nishi ?

* HIVE OR PRESTO QUERY

```
select agent, count(1)
from sample.tbl
group by agent
```

?


* JOB TYPE
Presto ?



NEXT

In the Scheduling section, you can schedule the report.


✓ Credentials

✓ Details

 Scheduling

Basic Scheduling  Advanced Scheduling 

Update Warn if the data is older than

If the update is unsuccessful, we **will not retry** and we'll send you a notification
[Change retry settings](#) 

Your data will be updated using the Replace method.
[Change update settings](#)


Enter a dataset name and description.

Save the dataset.

✓ Credentials

✓ Details

✓ Scheduling

 Name & Describe Your DataSet

NAME & DESCRIPTION

Create charts with Treasure Data.