

Birst with the Treasure Data JDBC Driver

Birst provides an easy-to-use cloud-based enterprise business intelligence (BI) service. By combining Birst and Treasure Data, users can quickly explore both operational data and big data.

Continue to the following topics:

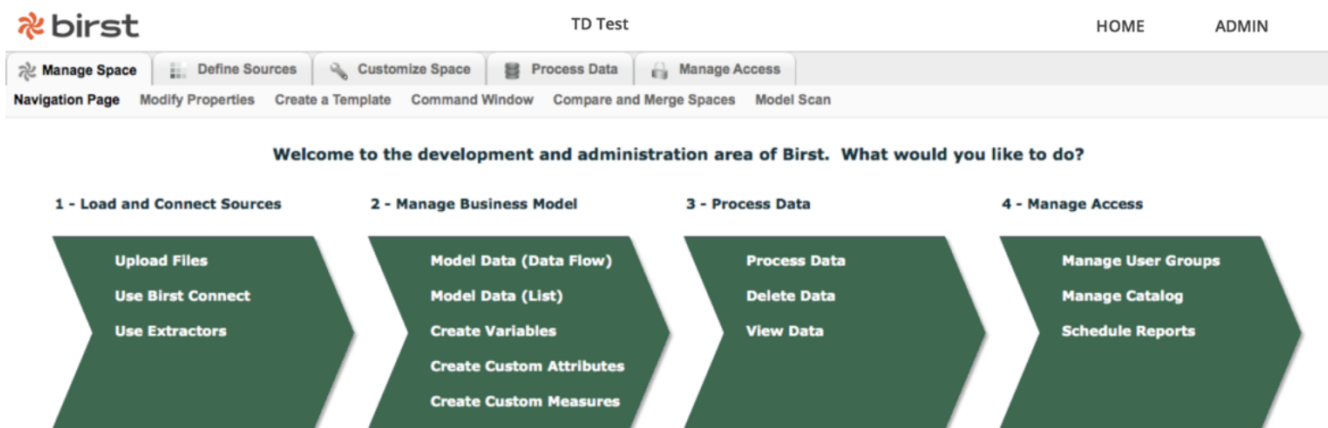
- [Prerequisites](#)
- [Download BirstConnect Artifacts](#)
- [Download Treasure Data JDBC Driver](#)
- [Launch Birst Connect](#)
- [Set Up Task](#)
- [Run the Task](#)

Prerequisites

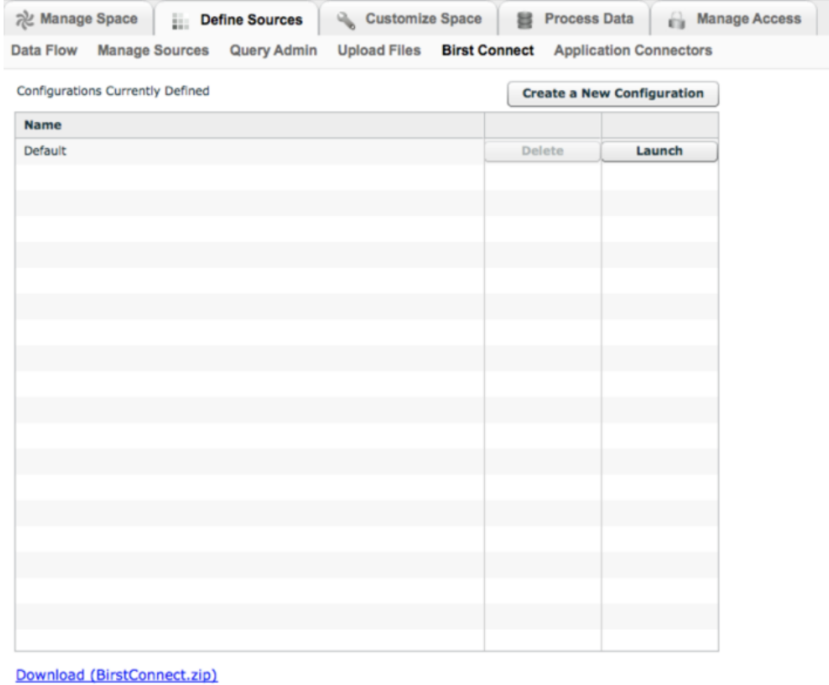
- Birst account
- Basic knowledge of Treasure Data and a Treasure Data account

Download BirstConnect Artifacts

Visit the [Navigation Page](#) under [Manage Space](#), and select [Use Birst Connect](#).



Download your .jnlp file by selecting [Launch](#) for one of your configurations. Also, download your `BirstConnect.zip` file.



Name	Delete	Launch
Default		

[Download \(BirstConnect.zip\)](#)

Put two files under the same directory. In this article, we'll reference the directory as `$BIRST_CONNECT_DIRECTORY`. Unzip `BirstConnect.zip`.

```
$ cd $BIRST_CONNECT_HOME
$ tar -zxvf BirstConnect.zip
```

Download Treasure Data JDBC Driver

Download [Treasure Data's JDBC driver](#) from here, and put the file to `$BIRST_CONNECT_HOME/dist/lib`.

```
$ cd $BIRST_CONNECT_HOME
$ mv /PATH/TO/td-jdbc-xxx-jar-with-dependencies.jar dist/lib/
```

Launch Birst Connect

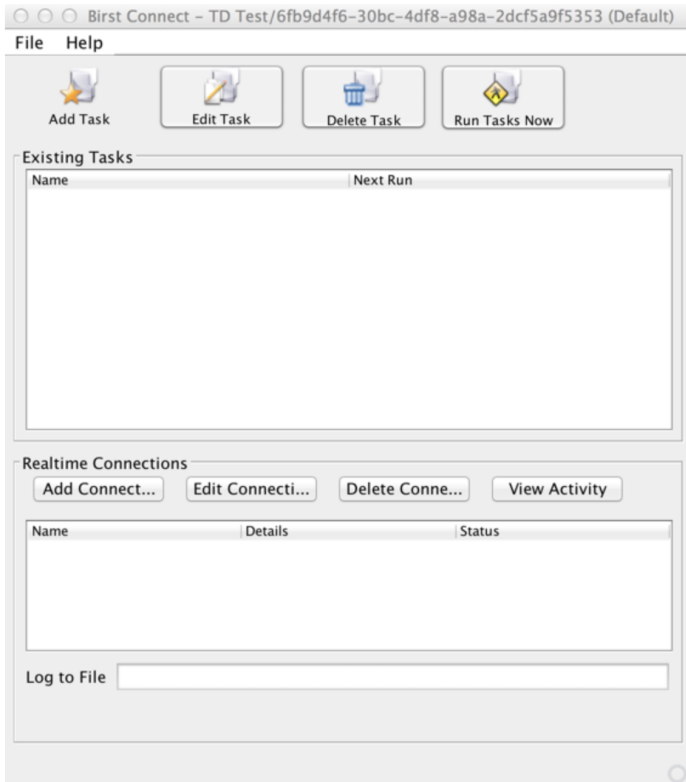
Launch Birst Connect. Specify the `.jnlp` file you've downloaded to the `dnlp.file` parameter.

```
$ java -Djnlp.file=/PATH/TO/xxx.jnlp -Xmx1024m -cp "dist/*:dist/lib/*" com.birst.dataconductor.DataConductorApp
```

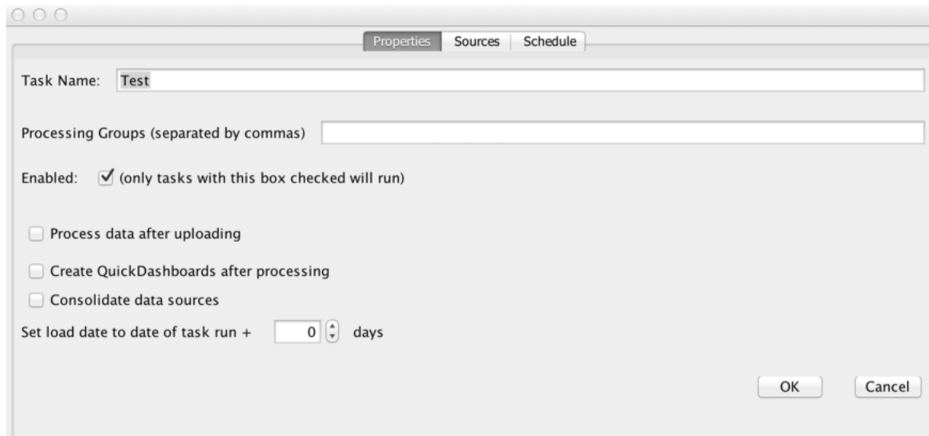
Set Up Task

After successfully launching Birst Connect, with the Treasure Data JDBC driver built-in.

Select **Add Task** to set up the task to extract data from Treasure Data into Birst.

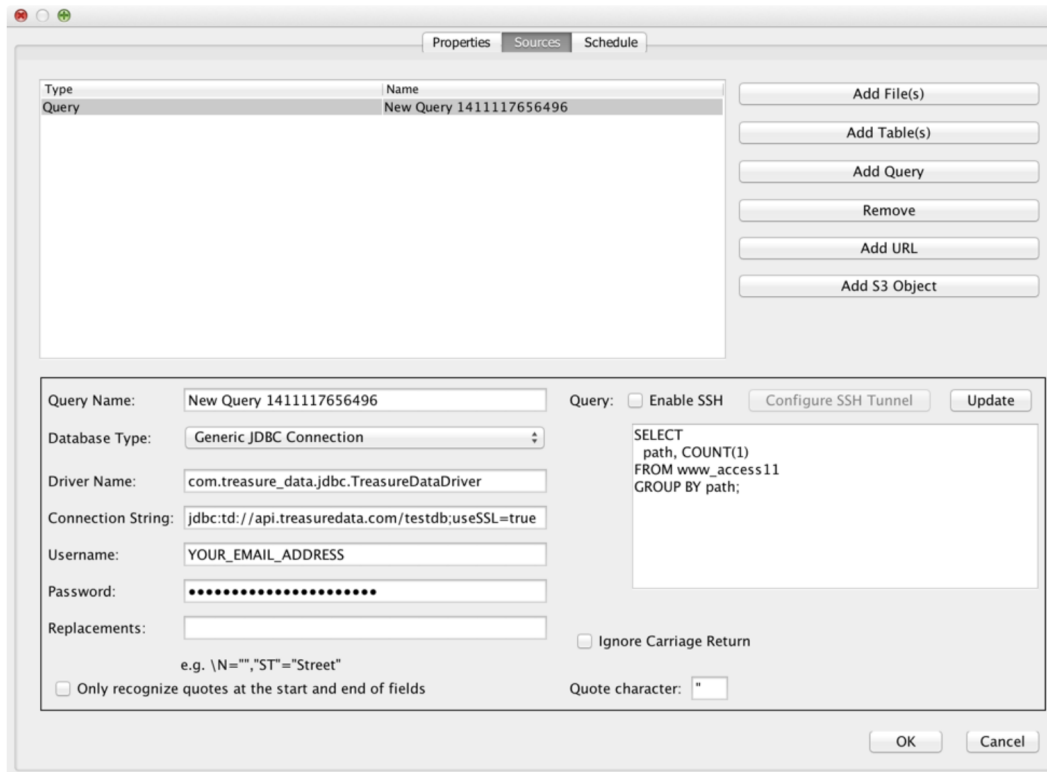


1. After launching, specify 'Task Name' first.



2. Go to the Sources tab and select **Add Query**.

Edit the fields to specify JDBC connection, accordingly.



- Database Type: Generic JDBC Connection
- Driver Name: com.treasuredata.jdbc.TreasureDataDriver
- Connection String: jdbc:td://api.treasuredata.com/testdb;useSSL=true
- Username: YOUR_TREASURE_DATA_EMAIL_ADDRESS
- Password: YOUR_TREASURE_DATA_PASSWORD
- Query: Your Query

You can switch query engines by using type parameters like `jdbc:td://api.treasuredata.com/testdb;useSSL=true;type=presto`. See the [Treasure Data JDBC Driver](#) documentation for more information.

Select **Update and Save** to save the task.

Run the Task

Go back to the Birst Connect main dialog and select **Run Tasks Now**. The query is executed on Treasure Data, and your data is inserted into Birst.