

Tableau Desktop for Windows Import Integration

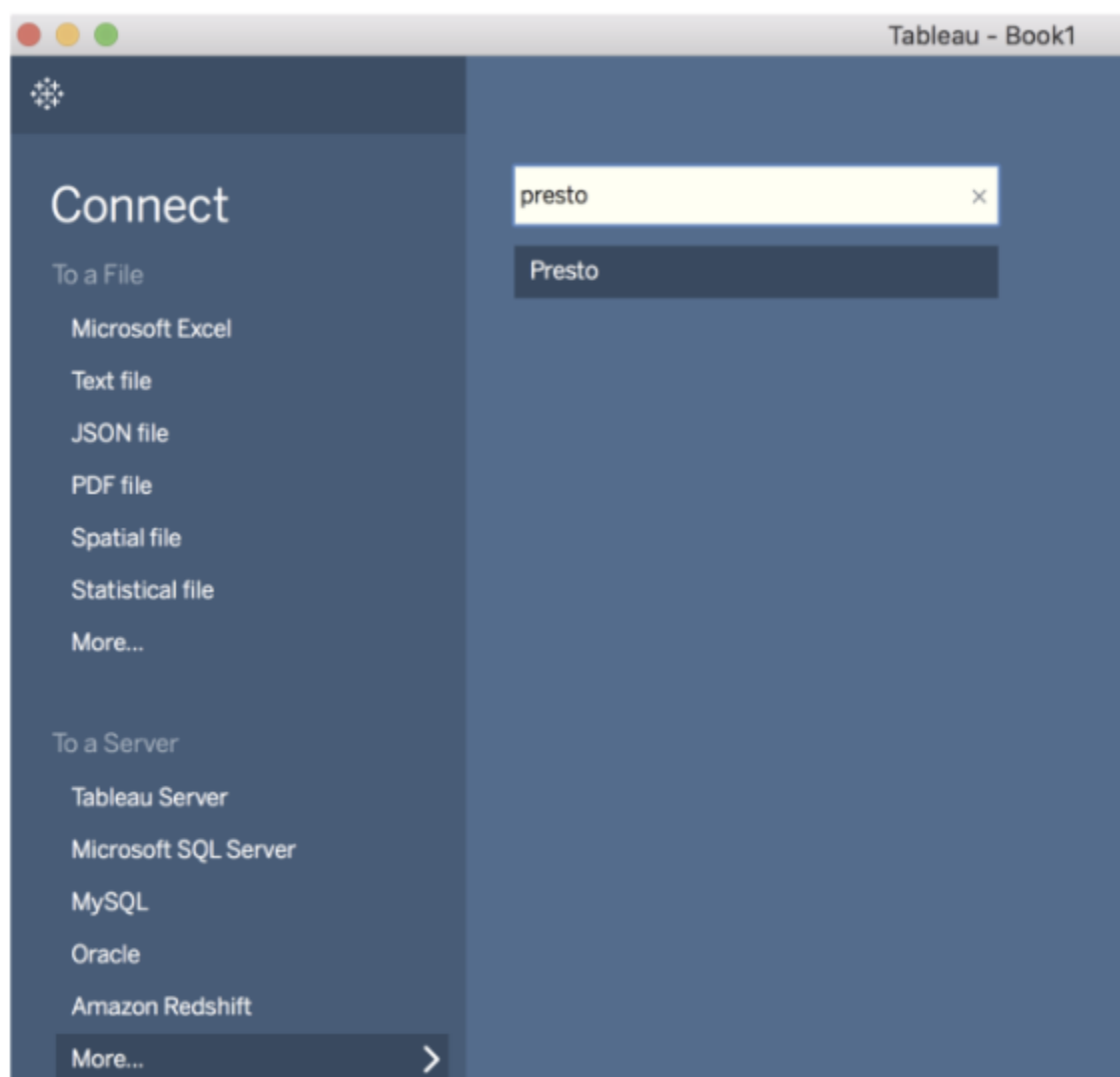
Using [Tableau Desktop](#) with Treasure Data enables you to interactively explore huge amounts of data. You can also use Treasure Data as a place to integrate and store all your data.

- [Make the Connection](#)
- [Connect to TD Presto Endpoint](#)
- [Confirm Import in Treasure Data](#)
- [Tips and Tricks](#)
 - [Convert Time Field as Datetime Type](#)

Make the Connection

Start Tableau. Click Connect > Presto.

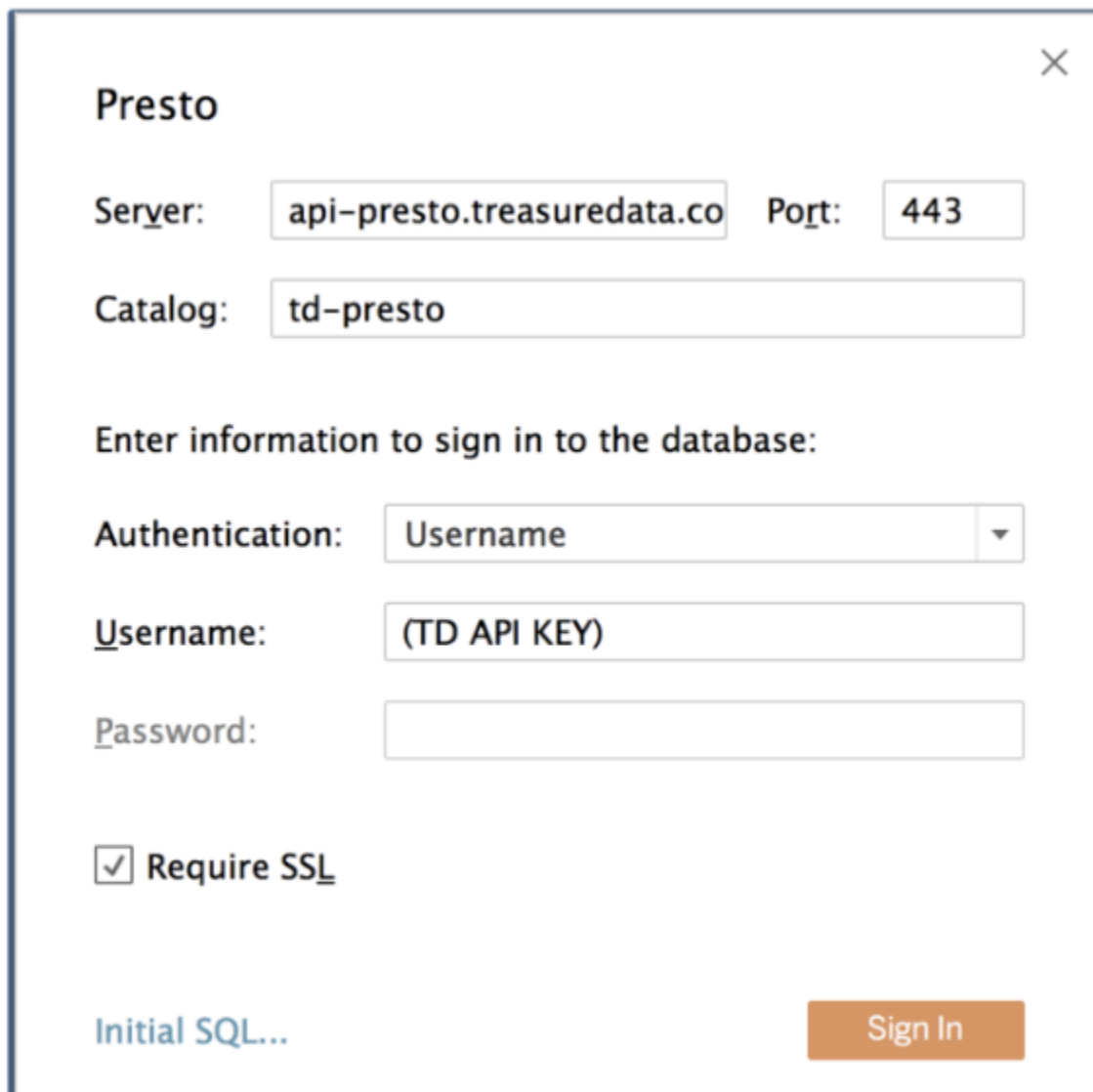
For a complete list of data connections, click To a Server > More.



Then complete the following steps:

1. Enter Presto JDBC/ODBC Gateway server: api-presto.treasuredata.com
2. Enter the port: 443
3. Enter the catalog name; td-presto
4. Select the Authentication method: Username
5. Enter the Username: Use your master APIKEY (Ref. [Get APIKEY](#))

6. Select the Require SSL check box.
7. Select Sign In.



The image shows a 'Presto' connection configuration dialog box. It has a title bar with a close button (X) in the top right corner. The main content area contains the following fields and controls:

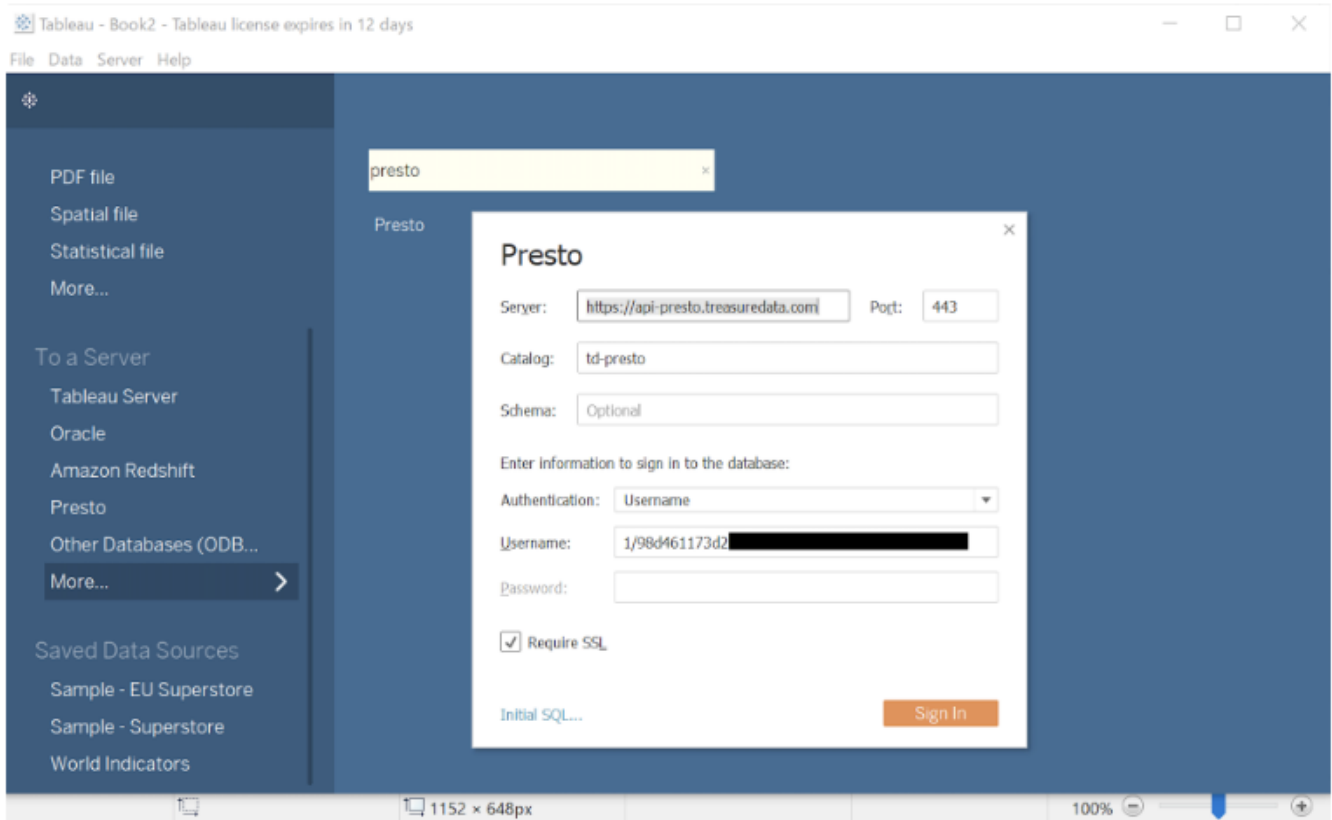
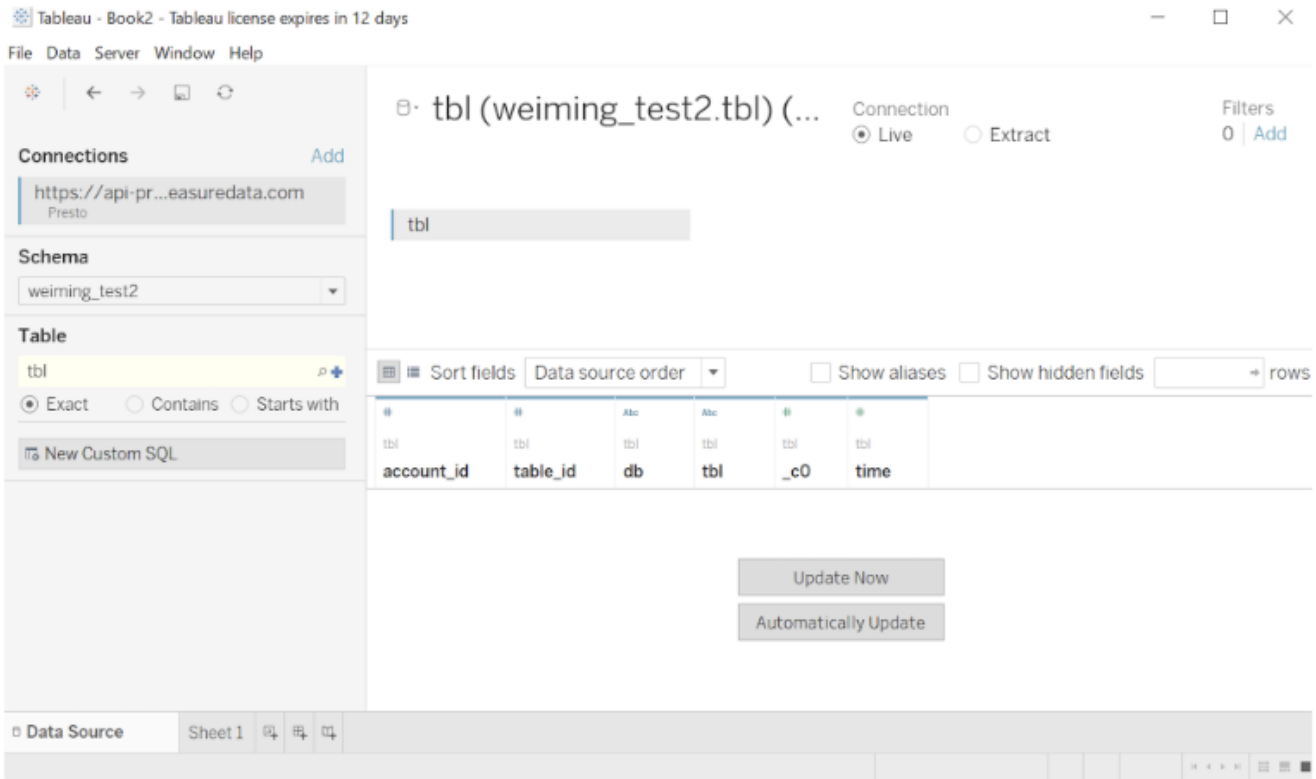
- Server:** A text input field containing 'api-presto.treasuredata.co'.
- Port:** A text input field containing '443'.
- Catalog:** A text input field containing 'td-presto'.
- Enter information to sign in to the database:** A section header.
- Authentication:** A dropdown menu currently set to 'Username'.
- Username:** A text input field containing '(TD API KEY)'.
- Password:** An empty text input field.
- Require SSL:** A checked checkbox.
- Initial SQL...:** A text input field at the bottom left.
- Sign In:** An orange button at the bottom right.

If Tableau cannot complete the connection, verify that your credentials are correct.

Connect to TD Presto Endpoint

Select **More** on the left menu. Choose *Presto* and enter the connection information. Select **Sign In**.

Enter a Schema (database name) and Table (table name) to import data from a table, or to write SQL that imports data from multiple tables. Select **Update Now** to see the data in the Tableau window.



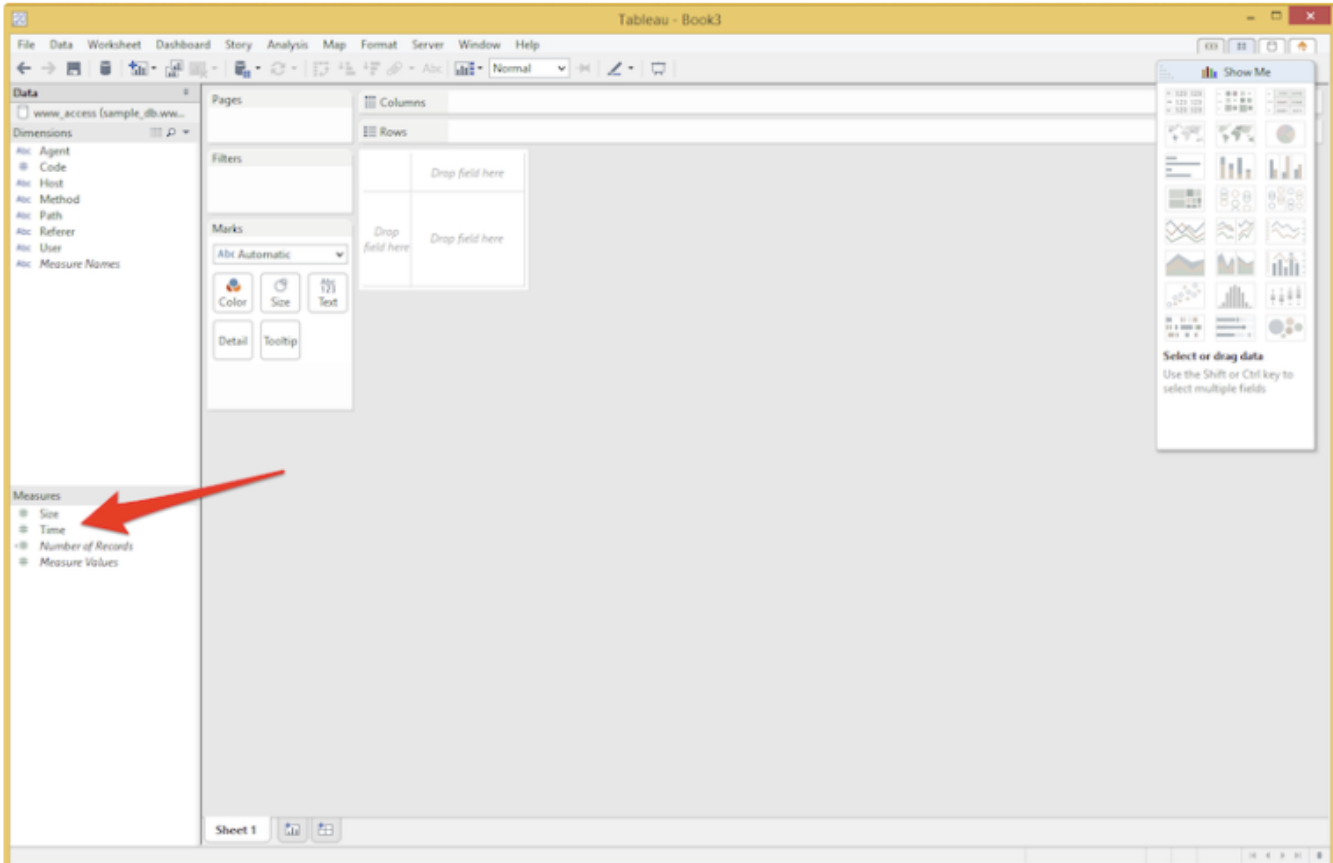
Confirm Import in Treasure Data

In Treasure Data, create a query to track the events coming in from Tableau Desktop. It usually takes 3-5 minutes before events appear in the TD Console.

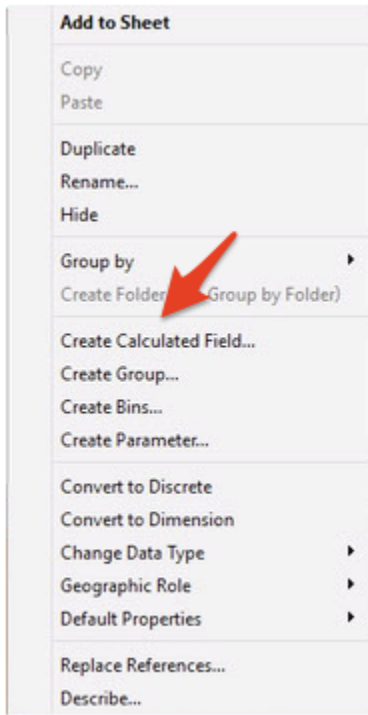
Tips and Tricks

Convert Time Field as Datetime Type

Treasure Data treats the time column as a UNIX timestamp by default, however, it's really convenient to handle timestamp with Datetime type in Tableau. The following example describes how to create the calculated Datetime field for the "time" column.

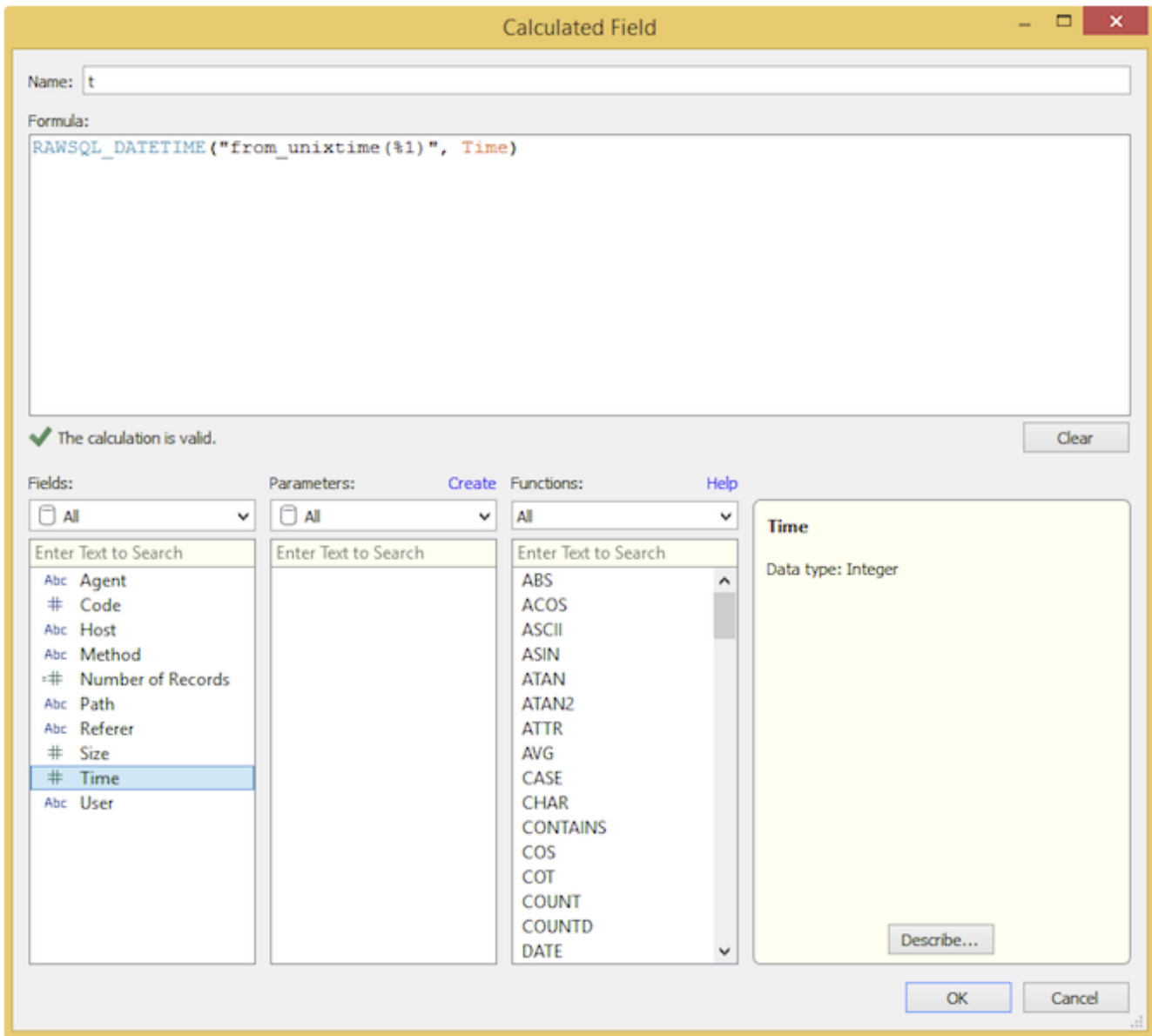


Select **Create Calculated Field**.



Then, enter the name and enter the following function within Formula section.

```
sql RAWSQL_DATETIME("from_unixtime(%1)", [time])
```



Next, the calculated field appears in a list of Dimensions, with a Datetime type.

