

Pentaho Report Designer Export Integration

You can use Treasure Data with [Pentaho Business Analytics](#) using [our JDBC driver](#). By combining Treasure Data with Pentaho, you can process huge volumes of data in the cloud, using existing Pentaho instances.

Don't have time to set up Pentaho and Treasure Data? Use our [Setup Consultation Service](#).

Continue to the following topics:

- [Download Pentaho Report Designer](#)
- [Download our JDBC Driver](#)
- [Add Treasure Data as Data Source](#)
 - [Add JDBC Driver to Pentaho](#)
 - [Create a New Data Source](#)
 - [Configure JDBC Connection](#)
 - [Create Reports](#)

Download Pentaho Report Designer

Download [Pentaho Report Designer](#). Version 3.9.0-GA was tested for this article.



Download our JDBC Driver

This driver works only with Treasure Data. It does not work with other environments such as your local Hadoop/Hive cluster.

Download `td-jdbc-jar-with-dependencies-(version).jar` from the following link.

- [Treasure Data JDBC Driver Download](#)

If you want to know more about Treasure Data JDBC driver, see <https://github.com/treasure-data/td-jdbc>.

Add Treasure Data as Data Source

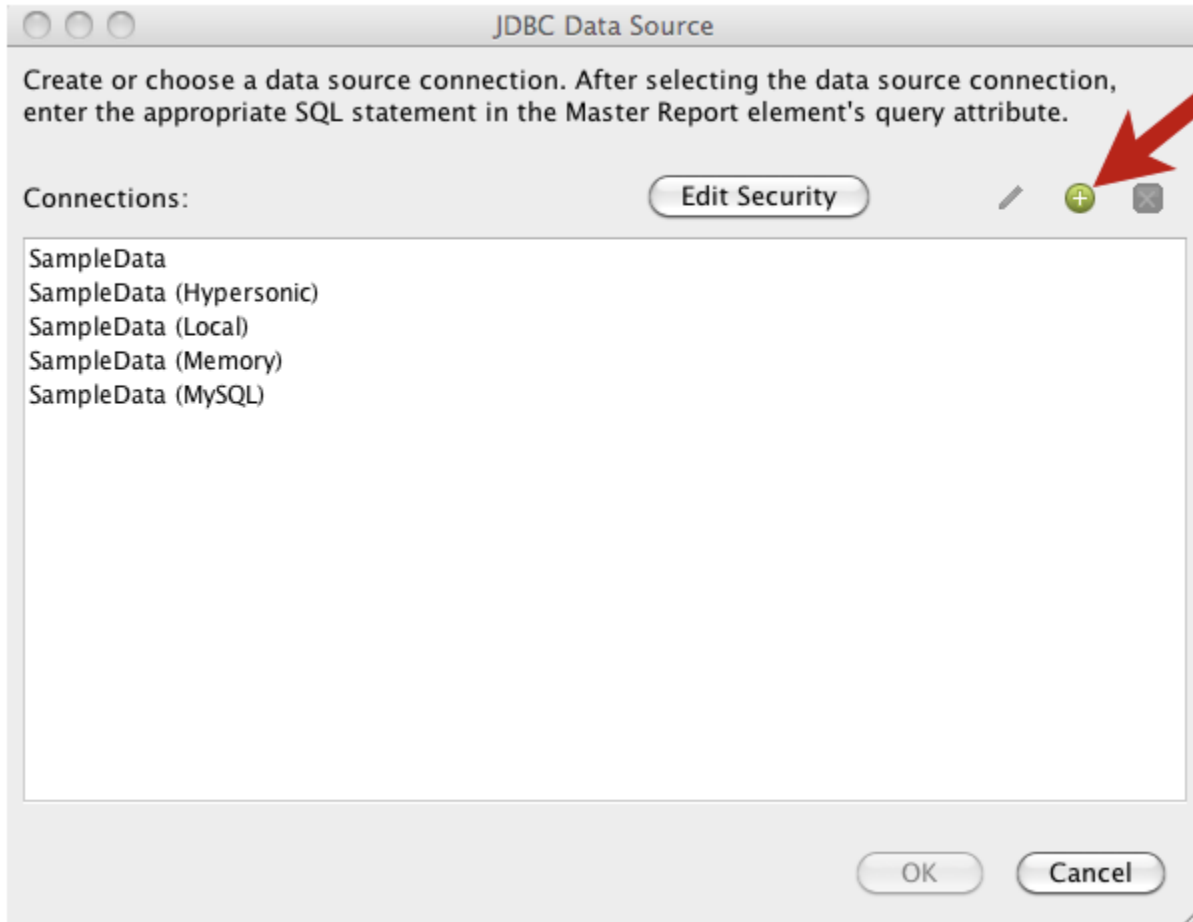
Add JDBC Driver to Pentaho

Let's copy the Treasure Data JDBC driver to Pentaho's JDBC directory. The command for the MacOS environment is as follows:

```
$ cp td-jdbc-jar-with-dependencies-(version).jar \  
/Applications/pentaho/design-tools/Pentaho\ Report\ Designer.app/lib/
```

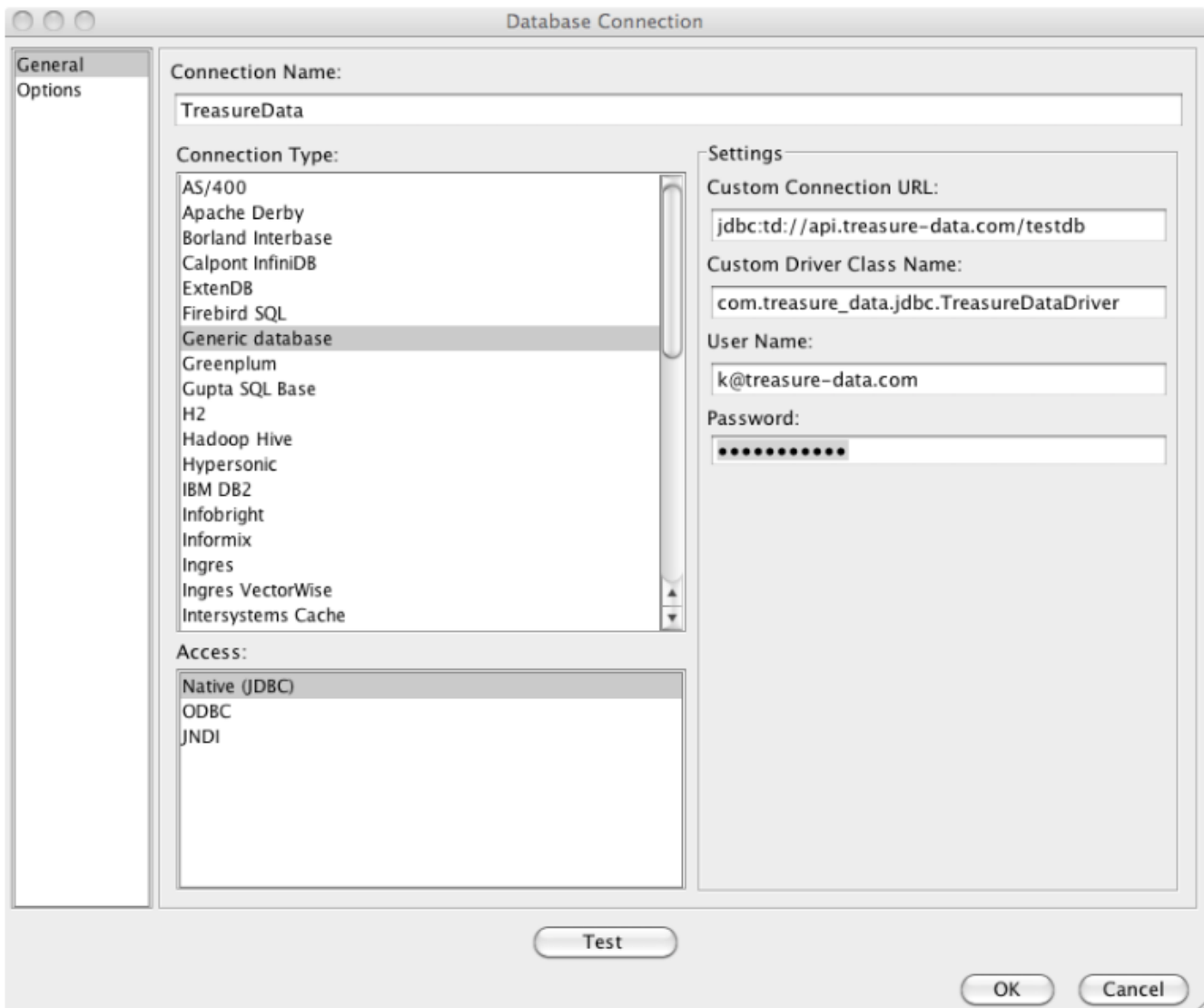
Create a New Data Source

Navigate to Data -> Add Data Source -> Advanced -> JDBC (Custom). Create a new data source, select the GREEN plus button.



Configure JDBC Connection

Select Generic database -> Native (JDBC) and configure the JDBC connection as follows. Be sure to edit your credentials (your email + password).



```
Connection Type: Generic Database
Custom Connection URL: jdbc:td://api.treasuredata.com/(database name)
Custom Driver Class Name: com.treasuredata.jdbc.TreasureDataDriver
User Name: Your TreasureData Account
Password: Your TreasureData Password
```

API endpoint is up to your account site.

If your account site is in Tokyo, then the Custom Connection URL is "jdbc:td://**api.treasuredata.co.jp**/(database name)".

For details, see [Sites and Endpoints](#).

Create Reports

You can create reports using generic SQL queries. Open the window from Data > Add Datasource > JDBC to add Treasure Data as the data source for the report. When you select **Preview**, the job starts running on the cloud (you can confirm this using the td jobs command). You can now design your reports using Treasure Data as a data source.

