

Using the TD Console

User Interface Enables Easy Flow-Through Platform Features

The Treasure Data [Console](#) gives you a comprehensive view of your account, including information about integrations, databases and tables, jobs, scheduled queries, and resource utilization. You can also manage TD account users, and create new queries and workflows.

The TD Console implements the same functions provided by TD Toolbelt, which is accessed from a command-line interface, and provides a user-friendly interface that enables you to move through various features of the Treasure Data platform.



Audience Studio and Policies are viewable and accessible only to TD customers who have purchased the feature.

- [User Interface Enables Easy Flow-Through Platform Features](#)
 - [Integrations](#)
 - [Databases and Tables](#)
 - [Queries](#)
 - [Schedules and Workflows](#)
- [Administration Views](#)
 - [Utilization](#)
 - [My Profile, Team, and Admin](#)

Integrations

You can view [Treasure Data Integrations](#) that enable you to import data into Treasure Data or export data from Treasure Data. You can select an integration and immediately begin configuring using user-friendly panes.

New Authentication

Adobe Analytics

1 Credentials > 2 Details

Host

Port

User

Authentication mode

Public/Private key pair

Secret key file

Passphrase for secret key file

Data limit

[Learn more](#) [CONTINUE](#)

Configuring the integration is a two-phase process. You first provide credentials to authenticate the connection and then you complete configuration by providing specifics about the data, and schedule for data activity.

Edit Source ✕

adobe_analytics_20170525_055906

1 Fetch from > 2 Source Preview > 3 Transfer to > 4 Schedule > 5 Details

Is user directory root?

Path prefix

Path match pattern

Regexp to match file paths. If a file path doesn't match with this pattern, the file will be skipped

Incremental?
When run repeatedly, attempt to only import new data since the last import. (Assumes lexicographic order)

Start after path

Only paths lexicographically greater than this will be imported

[NEXT](#)

After you authenticate an integration, you can use search and filters to quickly locate your configured connections on the Authentications page. Filter by owner or integration type (for example, you can see all Facebook connections in your account).

Integrations		Search			Filters	
Type	Authentication	Sources				
	by [redacted]ashi	0	NEW SOURCE	...		
	by [redacted]k_test	0		...		
	by [redacted]ama	0	NEW SOURCE	...		
	by [redacted]ita	0		...		
	by k[redacted]h[redacted]	0		...		
	[redacted]	0		...		
	by [redacted]ta.com	0	NEW SOURCE	...		

Filters

- Owner
 - All Users
- Integration Type
 - All Types
- DATA TRANSFER
 - Source
 - Destination

Databases and Tables

Visit the Console's Data Workbench > Databases page. Each database can own any number of tables. Search and select the 'sample_db' dataset to see a list of sample tables. Select a table name to view the contents of the table.

Data Workbench Databases / sample_datasets 4 tables QUERY

Tables Details

Name ^	Columns
..._test 0 bytes	7
nasdaq 168.3 MB · This sample dataset contains...	7
sample_tbl 0 bytes	1
www_access 0 bytes · This dataset is a short sample ...	9

Jobs

Visit the jobs page to get a list of jobs. You can filter your view of jobs by status: 'SUCCESS', 'ERROR', 'RUNNING', 'KILLED', and 'QUEUED'. Select one of the job numbers to view the job details page. Select any of the databases to which a job refers, to view the referenced database. Select a job ID to go to the job details page. The job details page shows basic information about the job and the original query. The page also provides information about the job's output. View this page to see exactly how the job performed. You can use this page to identify and analyze any error that might have occurred.

Queries

Visit the Data Workbench > Queries to create a new query or define a new scheduled query. You can also specify a target to write the query output result to. You can specify the processing engine—Presto or Hive—that you want to use when running your queries.

Data Workbench Queries / mb_mailchimp_3 SAVE RUN ... Q

mb_mailchimp_3 Type: Presto Reformat Export Results Schedule: None

1 Table
mailchimp_1

```

1 -- This query used to belong to but was reassigned when the user was deleted
2 select 'test@test.com' as email, 'Maryana6' as fname, 'B6' as lname
3

```

Table Preview **Query Result** Run History Jump to

Job ID 3553755 started Nov 2, 2017 11:09 am COPY TO CLIPBOARD

ERROR after 0 ms

```

started at 2017-11-02T18:09:41Z
executing query: -- This query used to belong to but was reassigned when the user
was deleted
select 'test@test.com' as email, 'Maryana6' as fname, 'B6' as lname
asdfasdagadfgadfgaadsfgas
finished at 2017-11-02T18:09:41Z

```

Schedules and Workflows

On the Workflows page, you can view scheduled runs and workflows. Select a schedule to view the run history. You can view schedule information, the workflow and queries associated with the schedule, and a list of all the jobs that originated from the query. You can create [workflows](#) to manage your incoming data or to prepare data to be exported.

Data Workbench

Workflows

GETTING STARTED

Workflows

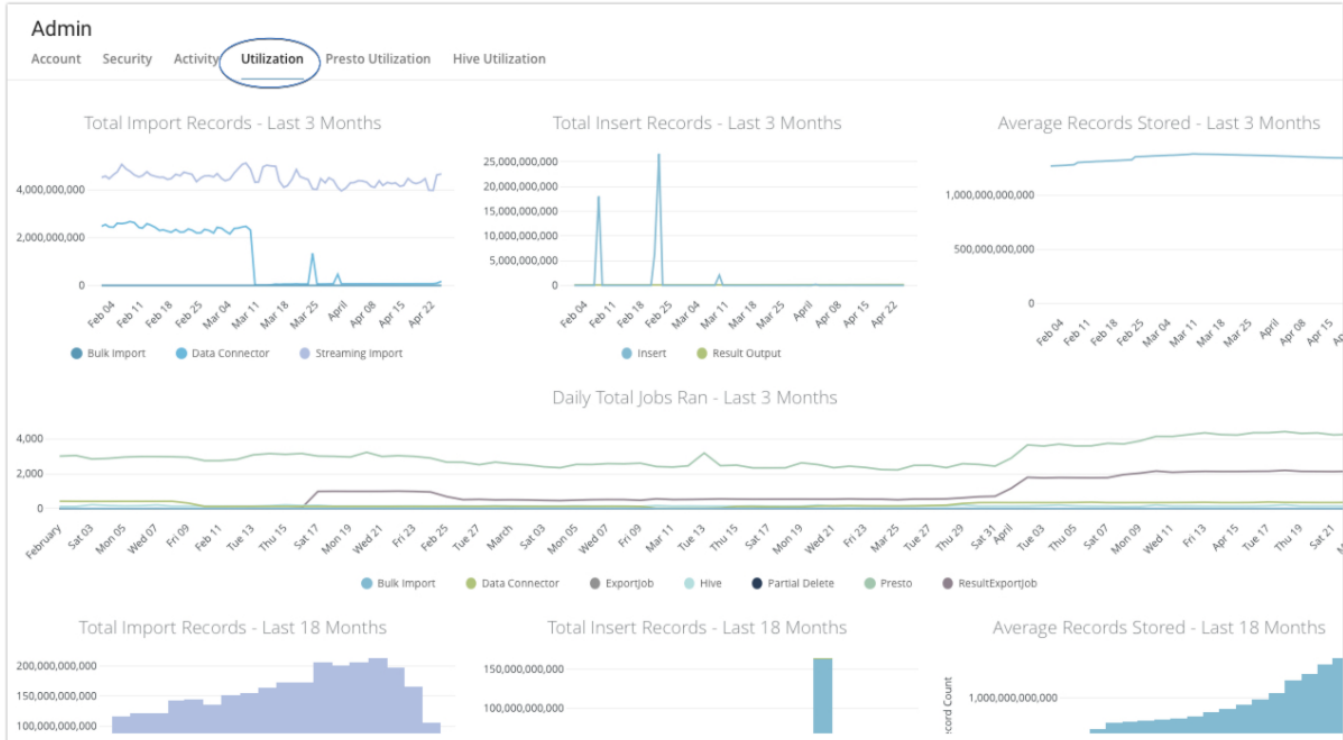
! Last Attempt ^

print_sh custom_scripts · User-Defined	● Aug 7, 2018 7:10 am
■ -preprocess-natural-language-data ■ ml-preprocess · User-Defined	● Aug 7, 2018 7:53 pm
I ■ _wf ■ _wf · User-Defined	● Aug 9, 2018 10:32 pm
google_adwords_op_workflow2 google_adwords_op_workflow · User-Defined	● Aug 20, 2018 2:54 pm
emr-test emr-test · User-Defined	● Aug 21, 2018 3:31 pm

Administration Views

Utilization

The utilization page summarizes the utilization of the allocated computation cores as well as the total number of records, the total compressed size, and number of queries issues. You must be an admin to view the utilization dashboard.



My Profile, Team, and Admin

You can view your profile.

If you are an Owner or Admin, you can select **Teams** to view the profiles of users in an account. You can select **Admin** to view and specify access control for your account. There can only be one account owner for each account. There can be multiple users granted administrator access or granted restricted access. As an administrator, you can set password and login criteria as well as specify a default processing engine for your account.

Various other roles, lower than an administrator, are defined. Refer to [Access Control](#) for a summary of the permissions associated with each role. The article also includes information about API keys and IP whitelists.